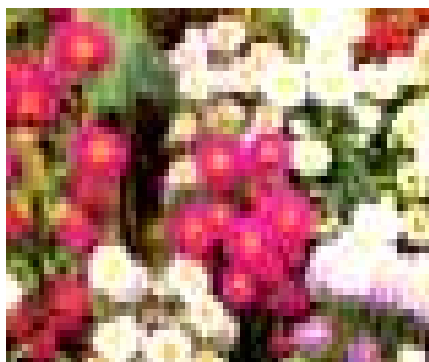


# HIGH Q GREENHOUSES INFORMATION SHEET

## ASTER

These colorful plants can be used indoors or out for table top displays. Once the blooms have faded the plant can be placed in the garden and will bloom again in late summer to fall.



### Matsumoto Mix

Spray type flowers in blue, lavender, pink, rose yellow and white with yellow eyes  
60 cm (2') plants



### Milady Mix

Chrysanthemum-type blooms in rose, pink, carmine and lavender  
25-30 cm/10-12" plants



### Pot'nPatio Mix

Fully double 7cm/3" flowers  
Best as a pot plant  
20-3cm (8-10") plants

---

<b>Flowering Time</b>	<ul style="list-style-type: none"><li>• Spring and late summer</li></ul>
<b>Habit</b>	<ul style="list-style-type: none"><li>• Compact, uniform and early blooming</li></ul>
<b>Requirements</b>	<ul style="list-style-type: none"><li>• <b>Light</b> – Sun to part-sun</li><li>• <b>Soil</b> – Well drained with pH 5.5 – 6.2</li><li>• <b>Water</b> – Average</li><li>• <b>Fertilizer</b> – Average</li><li>• <b>Temperature</b> –15-27°C (60-80°F)</li><li>• <b>Growth Rate</b> – 7 weeks to flowering after transplanting from 512s</li><li>• <b>Regulators</b> – Bonzi or B-Nine</li><li>• <b>Pests &amp; Diseases</b> – Whitefly, Powdery Mildew, Downey Mildew</li><li>• <b>Pinching</b> – None required</li></ul>
<b>Application</b>	<ul style="list-style-type: none"><li>• <b>Grower:</b> 4 to 6" pots, 1 - 3 gallon nursery containers, basket or box novelty containers</li><li>• <b>Consumer:</b> Table top display indoors or outdoors. The unique colors look great on their own or with other plants in patio pots, window boxes, color bowls and baskets or in garden beds</li></ul>

---

For more information visit <http://ballseed.com>

This plant material is available from **High Q Greenhouses**

T 780 939-7490

F 780 939-2010

[contact@highqgreenhouses.com](mailto:contact@highqgreenhouses.com)